

# Warm hearts

for cold noses

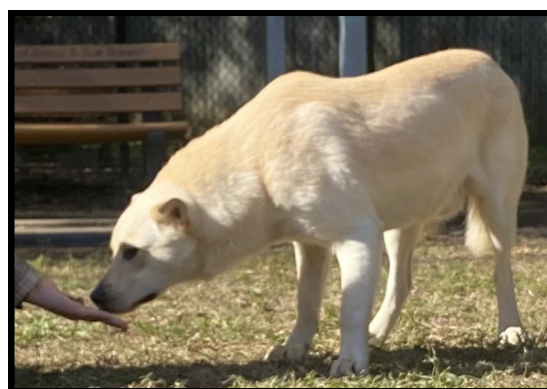
## humane society of pulaski county

14600 Colonel Glenn Road, Little Rock, AR 72210  
(501)227-6166 www.warmhearts.org



### THE "PAWS AND REFLECT" ISSUE

### FALL/WINTER 2024



*Clyde reflects as he moves forward...*

As we close our 78th year of dedication to rescue, we reflect on what we do and how our supporters make this happen. **Clyde** and **Roxie** spent days on the side of the road. Initially, we thought they were patrolling their property, but later we learned they were abandoned by their owners who moved and left them behind. Each day they stood by the road waiting for kind strangers to leave them food. Assisted by Preston Andrew Noland and his rescue, we were able to bring the two and the unborn litter of seven to the shelter for safety and their journey to trust humans again began.

We continue to be grateful to our community that supports us to help those that cannot help themselves. We appreciate donations, adoptions and goodwill spread to others about our mission!

Our special holiday wish is to see more adopters willing to take a chance on rescue by saying "We are here to save something!" Sometimes a perfect pet - like **deaf cat Heidi** - just needs a little time away from a shelter and an understanding home.

On Behalf of The HSPC Board of Directors,  
Have a Happy and Blessed Holiday!

*Debbie Howell*  
HSPC Board President



*Heidi in her new home*

<b>INSIDE THIS ISSUE:</b>	A	Shelter Wish List	33rd Annual Reigning Cats & Dogs	Reflecting On Adoptions	Reflecting On Volunteers	Spotlight On Warm Hearts	2025 HSPC Calendar	Strategies To Maximize Charitable Giving
	2	2	3	4	5	6	6	7

## A Christmas Promise To My Rescue Pet

*Though you came from a shelter, the streets or much worse,  
I feel I have been given a precious gift from the Universe!  
Though your breed may be mixed and your fur imperfect,  
You are my special one of a kind pet without any defect!*

*For this Christmas and days moving into time,  
I promise to give back your loss until you were mine.  
No matter where life takes us or how busy I get,  
There will always be time to train, play and pet pet pet!*

*You will never face hunger, pain, fear or neglect,  
Because you will be a part of my home worthy of respect!  
This promise is given freely with no expectation of return,  
I have a RESCUE and my reward is already earned!*

*~ Poem Penned by Debbie Howell, HSPC Board President*



**The Howell Kids**

### Our Shelter Wish List

#### Purina Chow Brand Food:

Dog Chow - Green Bag  
Puppy Chow - Blue Bag  
Cat Chow - Blue Bag  
Kitten Chow - Yellow Bag  
Kong & Interactive Toys  
Chew Toys (No Rope Toys)  
Stuffed Toys (No Beads)

Leashes - Clip or Slip  
Collars - Dog & Cat all sizes  
Hand Sanitizer  
White Copy Paper  
Zipper Bags all sizes  
Bath Towels & Blankets  
(new or used)  
Odo Ban from Sam's Club

Batteries all sizes  
Plastic Storage Containers  
Cat Grass Seed  
Milk-Bone Original Dog Treats (plain only),  
sizes mini, puppy, small and medium  
Tractor Supply Company Brand Equine Fresh  
Pine Pellet Stall Bedding (used in litter boxes)  
**Monetary donations are always welcome!**

**Amazon Wish List:** Please go to [warmhearts.org/wish-list](https://www.warmhearts.org/wish-list) and click on "Amazon Wish List"

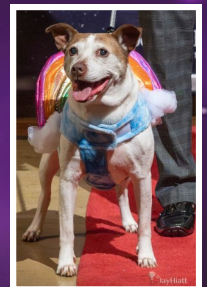
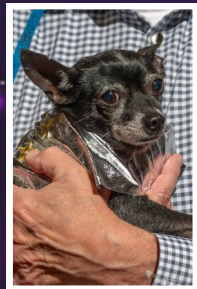


## 33rd Reigning Cats & Dogs: Out Of This World!



Special thanks to Jay Hiatt, Arkansas Photography Club President, for the RC&D photographs below.

The 2024 Reigning Cats & Dogs Fundraiser wrapped up as a truly “Out Of This World” experience! Hosted by our returning witty co-hosts of THV’s The Vine, Ashley King and Adam Bledsoe, the evening was filled with laughter and charm! A record number of sponsors and donors kicked off an amazing evening of bidding followed by a weeklong online auction. Five amazing adoptable dogs from the shelter dressed as astronauts made their way down the red carpet and most have already been adopted! Our 2025 calendar cover girl, Freeway, an HSPC alumni also wowed the crowd with her grand entrance. It was memorable and all we can say is just wait until 2025!



### 2024 Reigning Sponsors

Cindy Conger ★ Lyn & Bill Owens

Tricia Brown ★ Tommie & Jay Marsh ★ Lisenne Rockefeller ★ Natalie & Win Rockefeller Jr.

In Memory of Nancy & Daniel Wilkes ★ Online Technologies - Phil Dively

Jim Britt, DVM ★ Dr. Barry Buckner - In Memory of Hemingway ★ The Chacko Group at Morgan Stanley

Cici Conger-Portie ★ Regan Ellis ★ Ann & Bobby Gough - In Honor of HSPC Volunteers

Karen & Jerry Herbert ★ Debbie Howell ★ Johnson Farms - Damascus Division, LLC ★ Stan Jorgensen

Cecelia & Drew Kelso ★ Marvin Moody, Mark Allen & Ruby ★ Sharon & David Morris ★ Doug Quimby

Shackleford Road Veterinary Clinic - Dr. Brian & Catherine Barron ★ Wags & Whiskers

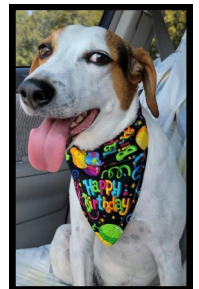
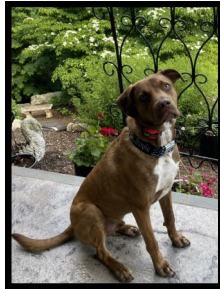
Nancy & Bob Watkins ★ Laurie & Bobby Whitfield

Many thanks to our Tom Cat and Lil' Cat sponsors too!

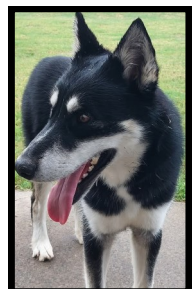
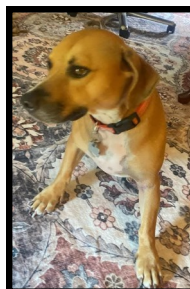
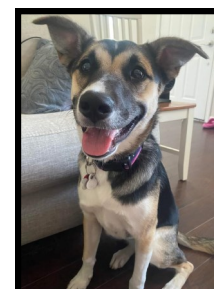
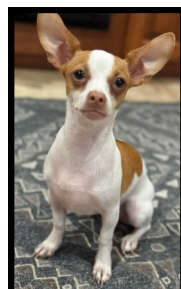
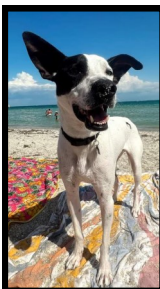
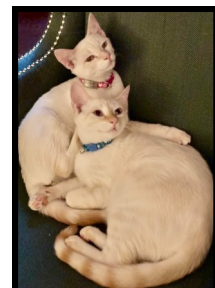
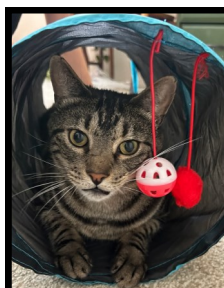
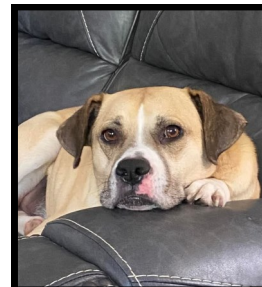
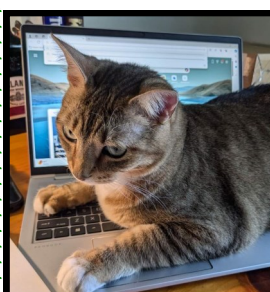


## Reflecting On Hope: Adopt A Shelter Pet And Change Their Life And Yours!

Thanks to our wonderful adopters, all the pets below are in warm and loving homes for the holidays. But many more are still waiting at our shelter. To view our available pets, please visit the HSPC shelter at 14600 Colonel Glenn Road in Little Rock Wednesday through Sunday from 11am to 5pm. To view online or submit an adoption application, go to: [warmhearts.org/adopt](https://www.warmhearts.org/adopt)



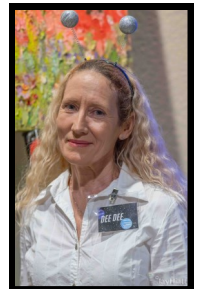
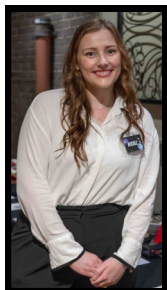
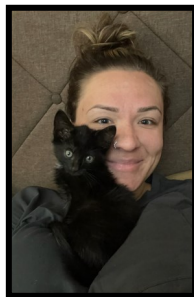
**NICE LIST  
PRO TIP:  
IF YOU CAN'T  
BE GOOD,  
TRY BEING  
CUTE!**





# Reflecting On Compassion: Our Volunteers In Action

Are you interested in volunteering with HSPC? There are endless ways to help! To sign up for a volunteer orientation class (required), please go to: [warmhearts.org/volunteer-opportunities](http://warmhearts.org/volunteer-opportunities) (Volunteers must be 18 or older.)







## ♥ ♥ Spotlight On Warm Hearts ♥ ♥ Heath Nicholson, HSPC Volunteer Coordinator



For a long time, we have been searching for the perfect volunteer coordinator. We knew we needed an organized person that could balance communication with volunteers, working with events, as well as ongoing training of volunteers. We also needed someone who could effectively photograph and write authentic and inspiring animal bios. We found all this as well as something else with Heath Nicholson! Coming from a career as a hair stylist and some volunteer work with another rescue, we had no idea that Heath would add the special element of “heart” to his work. Heath knows his volunteers and makes a special point of welcoming them whenever they show up to volunteer in any capacity.

An unexpected bonus is Heath’s connection with the animals at our shelter. Though his days are long, he makes a special point of bonding with animals particularly those that may need a little more help connecting with their forever homes to be. He is also assembling a group of very special in-shelter volunteers to focus their attention on some of these animals. This is why our new Volunteer Coordinator, Heath Nicholson, deserves the Warm Hearts Spotlight on him!



# 2025 HSPC Wall Calendars are HERE! \$20 each\*

If you'd like to order for shipping, you can visit <https://warmhearts.org/donate/wallcalendar2025>.

\*does not include shipping

### HUMANE SOCIETY OF PULASKI COUNTY™



Warm Hearts for Cold Noses



## Strategies To Maximize Your Charitable Giving



Many investors care deeply about giving back to their communities, and they often do so through traditional monetary gifts. While cash can be an easy and convenient vehicle to support your favorite nonprofits, there are other gifting strategies that may help maximize the value of your generosity and provide tax advantages. Here's an overview on four strategies that may be worth exploring.

### 1. GIFT HIGHLY APPRECIATED STOCKS OR OTHER ASSETS

If you hold stocks or other investments for more than one year that have gained value, you may consider liquidating the asset to make a charitable donation with the proceeds. However, doing so may result in a taxable long-term capital gain. One potentially more efficient way to maximize the value of your donation is to give appreciated stock directly to a qualified charity. The charity would receive an asset it can continue to hold or immediately sell and you would not generate taxable income from a sale of the asset prior to the donation. Additionally, the market value of the stock at the time the gift is made is generally deductible from your adjusted gross income if you itemize your deductions (subject to income-based limitations). Check to ensure the charity accepts this type of donation before exploring it as a financial strategy.

### 2. ESTABLISH A CHARITABLE TRUST

Another way to consider gifting assets is to set up a charitable trust. Trusts can help you manage highly appreciated assets in a more tax-efficient manner while, in some cases, allowing you to split assets among charitable and non-charitable beneficiaries. The timing of each gift and the flexibility you want dictates the type of trust that works best. With a Charitable Lead Trust, a charity is funded with income from assets placed in the trust for a specified time period. After that time, the remaining assets revert to other named beneficiaries, such as your heirs. In a Charitable Remainder Trust, the reverse occurs. The trust makes regular income payments back to you or another beneficiary. After a period of time specified in the trust, the remaining assets are directed to the named charities. These trusts have specific rules and are generally established through a professional. An alternative option is to choose a donor-advised fund, which allows you to make a large donation that may be immediately deductible from taxes but gives you the flexibility to recommend gifts to charities spread out over a period of years. Work with your attorney or tax professional for additional information on what may be appropriate for your circumstances.

### 3. MAXIMIZE DONATIONS THROUGH YOUR EMPLOYER

Workplace giving campaigns are becoming increasingly popular. Your employer may offer the convenience of making contributions through payroll deductions, allowing you to give systematically with each paycheck. In addition, your employer may match a certain donation amount, which can add to the impact your gift makes. If you have access to these or other workplace giving programs, check to see if the charities you care about are eligible to receive this type of donation.

### 4. MAKE A CHARITABLE INDIVIDUAL RETIREMENT ACCOUNT (IRA) DONATION

If you have reached age 70 ½, or wish to wait until the age at which you are required to take distributions from your traditional IRA each year, but you don't need the money to meet your essential and lifestyle expenses, you may prefer to avoid the resulting tax bill. An alternative is to take advantage of the Qualified Charitable Distribution rule. It allows you to transfer funds directly from your IRA to a qualified charitable organization. This is a tax-efficient way to shift up to \$105,000 in 2024 out of an IRA. By doing so, you may avoid having to claim income (and subsequent tax liability) since you would not receive the required distribution. If you have not yet reached the age at which you are required to take distributions, you may want to consider this strategy as part of your retirement plan. To determine when required distributions will start for you (based on your birth year), visit [IRS.gov](https://www.irs.gov).

As you consider these charitable giving along with other gifting strategies, consult with your financial advisor and tax advisor. These professionals can help you evaluate the choices to ensure the gifts you make are most effective for your goals and consistent with your overall financial plan.

###

Article written and graciously provided to HSPC by GS Jeremy White, Private Wealth Advisor, White and Associates, a private wealth advisory practice of Ameriprise Financial Services LLC located in North Little Rock, Arkansas. To contact, please call 501-975-2639 or you may email [jeremy.x.white@ampf.com](mailto:jeremy.x.white@ampf.com). Ameriprise Financial, Inc. and its affiliates do not offer tax or legal advice. Consumers should consult with their tax advisor or attorney regarding their specific situation.

© 2023 Ameriprise Financial, Inc. All rights reserved.



# HUMANE SOCIETY of PULASKI COUNTY™



*Warm Hearts for Cold Noses*

14600 Colonel Glenn Road  
Little Rock, AR 72210  
501-227-6166

**How we are funded: Our support comes from memberships, donations, fundraisers, and bequests. We receive no city, county or state funds - nor are we affiliated with any national animal organizations.**

This newsletter was created with love by Board members Debbie Howell and Sharon Morris and Development Director Julie Austin.



*“What lies behind us and what lies before us are tiny matters compared to what lies within us.”*

*~ Ralph Waldo Emerson*



## **SEASON’S GREETINGS FROM THE HSPC BOARD, VOLUNTEERS AND STAFF!**

***This holiday season, we celebrate the hope and compassion you’ve helped bring to our mission, and we look forward to another year of saving lives together!***