

# Warm hearts

for cold noses

## humane society of pulaski county

14600 Colonel Glenn Road, Little Rock, AR 72210  
(501)227-6166 [www.warmhearts.org](http://www.warmhearts.org)



### THE RESILIENT ISSUE

SPRING/SUMMER 2023

Dear Humane Society Supporter,

The tornado of March 31 in Central Arkansas impacted property, people and their pets. We were inspired by the encouraging words of Governor Sarah Huckabee Sanders who reminded us that Arkansans are **resilient** and will band together to overcome this devastation. We are so proud to be a part of a community of animal lovers and protection agencies that continue to go the distance for pets and their families in this crisis.

We salute groups like Southern Hearts Rescue who set up a Facebook page for individuals to post lost, found and injured pets in the storm's aftermath. ArkanPaws and Cavalier Rescue USA joined the efforts with boots on the ground looking for lost pets and reuniting many with their families. Community Cats of Central Arkansas played a significant role in saving our displaced cats and kittens. Active Central Arkansas animal control agencies including Little Rock Animal Village, North Little Rock Animal Shelter, Sherwood Animal Shelter, Jacksonville Animal Shelter, Maumelle Animal Services and Cabot Animal Shelter have taken in lost and found animals. We also respect that there were many other rescues involved as well. (Continued on Page 2.)



### Shelter From The Storm:

*These are a few of the pets that came to us after the storm from affected areas.*

#### INSIDE THIS ISSUE:

First Aid Kit For Pets	Shelter Wish List	Disaster Preparedness For Pets	Heartworm Disease In Arkansas	Hoarding Case Assistance	Low-Cost Spay/Neuter Options	5th Annual Pet Photo Contest	32nd Annual Reigning Cats & Dogs	Spotlight On Warm Hearts	Bissell Empty The Shelters
2	2	3	4	5	5	6	6	7	7

## Shelter From The Storm (Continued)

The Arkansas Department of Agriculture appealed to veterinarians to be first responders and sensitive to injured animals in the affected areas. They provided grant information to help cover costs. Out West Veterinary Urgent Care of Little Rock stepped up their services immediately after the impact of the storm. Several boarding facilities offered boarding at reduced or no cost for people with no place to keep their pets. Also, we know that many individuals in our community have donated money and offered to foster. Your unselfish spirit keeps us all moving forward!

HSPC's role has been supportive by taking supplies for people with pets affected by the tornado to a distribution group, making phone calls to our partners for help and rerouting all donations for the tornado relief to rescues directly involved in those efforts. Though our shelter space was limited, we dedicated what was available to animals who were likely lost because of the storm. We gained many new friends and allies making us more prepared for the next time. As we join together in the best interest of pets and their families, we become a mighty force!

On Behalf of the Board of Directors,

*Debbie Howell*

HSPC Board President

## Pet Emergency Preparation: First Aid Kit

A fully equipped first aid kit for your pets should include these items in a waterproof container.

- |  |  |
|--|--|
| * Latex (or hypoallergenic material) gloves  | * Insect sting stop pads   |
| * Gauze sponges (a variety of sizes)   | * Cotton-tipped swabs  |
| * Gauze roll, 2-inch width   | * Instant cold pack  |
| * Elastic cling bandage  | * Epsom salts  |
| * Material to make a splint  | * Baby-dose syringe or eye dropper   |
| * Adhesive tape, hypoallergenic  | * Sterile eye lubricant  |
| * Non-adherent sterile pads  | * Sterile saline wash  |
| * Small scissors   | * Safety pins (medium size 4)  |
| * Tweezers   | * Tongue depressors  |
| * Magnifying glass   | * Diphenhydramine (Benadryl), if approved by your veterinarian   |
| * Grooming clippers or safety razor  | * Glucose paste or syrup   |
| * Nylon leash  | * Styptic powder or pencil   |
| * Towel  | * Plastic card (such as an old credit card) to scrape away stingers  |
| * Muzzle   | * List of emergency phone numbers including those for your pet's veterinarian, an afterhours emergency veterinary hospital, and the National Animal Poison Control Center (1-888-426-4435) |
| * Compact emergency "blanket" (available in the camping department of many stores) | * Petroleum jelly  |
| * Water-based sterile lubricant  | * Penlight with batteries (AA)   |
| * Hydrogen peroxide (3 percent)  | * Clean cloth  |
| * Rubbing alcohol  | * Needle-nose pliers   |
| * Topical antibiotic ointment  |  |
| * Antiseptic towelettes  |  |



Source: [redcross.org](https://www.redcross.org)

## Our Shelter Wish List

<b>Purina Chow Brand Food:</b>	Stuffed Toys (No Beads)	Odo Ban from Sam's Club
Dog Chow—Green Bag	Leashes—Clip or Slip	Plastic Storage Containers
Puppy Chow—Blue Bag	Collars—Dog & Cat all sizes	Milk-Bone Original Dog Treats (plain only), sizes mini, puppy, small and medium
Cat Chow—Blue Bag	White Copy Paper	Tractor Supply Company Brand Equine Fresh Pine Pellet Stall Bedding (used in litter boxes)
Kitten Chow—Yellow Bag	Zipper Bags all sizes	
Kong & Interactive Toys	Blankets & Bath Towels	
Chew Toys (No Rope Toys)	(new or used)	<b>Monetary donations are always welcome!</b>

**Amazon Wish List:** Please go to [warmhearts.org/wish-list](https://www.warmhearts.org/wish-list) and click on "Amazon Wish List"



## Disaster Preparedness For Your Pets



Our pets enrich our lives in more ways than we can count. In turn, they depend on us for their safety and well-being. The best way to ensure the safety of your family is to be prepared with a disaster plan. If you are a pet owner, that plan includes your pets. Being prepared can help save lives.

### How can I prepare?

Plan to take your pets with you in an evacuation. If it is not safe for you to stay, it is not safe for them either.

- Know which hotels and motels along your evacuation route will accept you and your pets in an emergency. Call ahead for reservations if you know you may need to evacuate. Ask if no-pet policies could be waived in an emergency.
- Most Red Cross shelters cannot accept pets because of health and safety concerns and other considerations. Service animals that assist people with disabilities are allowed in Red Cross shelters.
- Know which friends, relatives, boarding facilities, animal shelters or veterinarians can care for your animals in an emergency. Prepare a list with phone numbers.
- Although your animals may be more comfortable together, be prepared to house them separately.
- Include your pets in evacuation drills so that they become used to entering and traveling in their carriers calmly.
- Make sure that your pet's vaccinations are current and that all dogs and cats are wearing collars with securely fastened, up-to-date identification. Many pet shelters require proof of current vaccinations to reduce the spread of disease.
- Consider having your pet microchipped by your veterinarian.

### What should I do?

Assemble a portable kit with emergency supplies for your pets. Keep items in an accessible place and store them in sturdy containers so that they can be carried easily. Your kit should include:

- Sturdy leashes, harnesses and/or carriers to transport pets safely and ensure that they can't escape.
- Food, drinking water, bowls, cat litter/pan and a manual can opener.
- Medications and copies of medical records stored in a waterproof container.
- A first aid kit (see page 2 of this newsletter)
- Current photos of you with your pet(s) in case they get lost. Since many pets look alike, this will help to eliminate mistaken identity and confusion.
- Information on feeding schedules, medical conditions, behavior problems, and the name and number of your veterinarian in case you have to foster or board your pets.
- Pet beds and toys, if easily transportable.

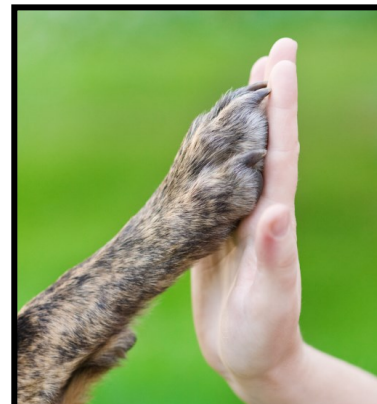
### Know what to do as the disaster approaches.

- Often, warnings are issued hours, even days, in advance. At the first hint of disaster, act to protect your pet.
- Call ahead to confirm emergency shelter arrangements for you and your pets.
- Ensure that all pets are wearing collars with securely fastened, up-to-date identification.
- Check that your pet disaster supplies are ready to take at a moment's notice.
- Bring pets inside so you won't have to search for them if you need to leave quickly.

### After a disaster...

- The behavior of pets may change dramatically after a disaster, becoming aggressive or defensive, so be aware of their well-being and protect them from hazards to ensure the safety of other people and animals.
- Watch your animals closely and keep them under your direct control as fences and gates may have been damaged.
- Pets may become disoriented, particularly if the disaster has affected scent markers that normally allow them to find their home.
- Be aware of hazards at nose and paw level, particularly debris, spilled chemicals, fertilizers and other substances that might not seem to be dangerous to humans.
- Consult your veterinarian if any behavior problems persist.

Source: [redcross.org](https://www.redcross.org)



## Beyond The Storm: The Everyday Realities Of Pet Ownership In Arkansas

Arkansas is the natural state surrounded by beautiful waterways, state parks and miles of beautiful space. At the same time, our pets may be exposed to exceptional health concerns unless prevented.

### **HEARTWORM DISEASE**

Arkansas is ranked #4 in the nation for heartworm disease. Of the adult dogs entering our shelter, we can expect about 1 in 4 to be positive. Why? Because the states with the highest percentages of positive cases continue to be in the Southeastern and Gulf Coast regions, where the climate creates ideal conditions for heartworm transmission.

According to the American Heartworm Society, heartworm disease is serious and potentially fatal. It is caused by foot-long worms (heartworms) that live in the heart, lungs and associated blood vessels of affected pets.

This results in severe lung disease, heart failure and damage to other organs in the body. Heartworm disease affects mainly dogs, but sometimes cats and ferrets.

Adult female heartworms living in an infected dog (or other host) give live birth to “baby worms” (larvae) called *Microfilaria*. The *Microfilaria* then circulate in the bloodstream of the affected host. When a mosquito bites and takes a blood meal from an infected animal, it picks up these baby worms. Then when the infected mosquito bites another animal, the infective larvae are deposited onto the surface of the animal's skin and enter the new host through the mosquito's bite wound. If untreated, these larvae can grow into adult heartworms. Dogs have been known to harbor several hundred adult heartworms in their bodies. Heartworm disease causes lasting damage to the heart, lungs and arteries, and can affect the dog's health and quality of life long after the parasites are gone.

**Treatment:** When needed, treatment should be administered as early in the course of the disease as possible.

**Prevention:** The American Heartworm Society recommends that you “think 12:”

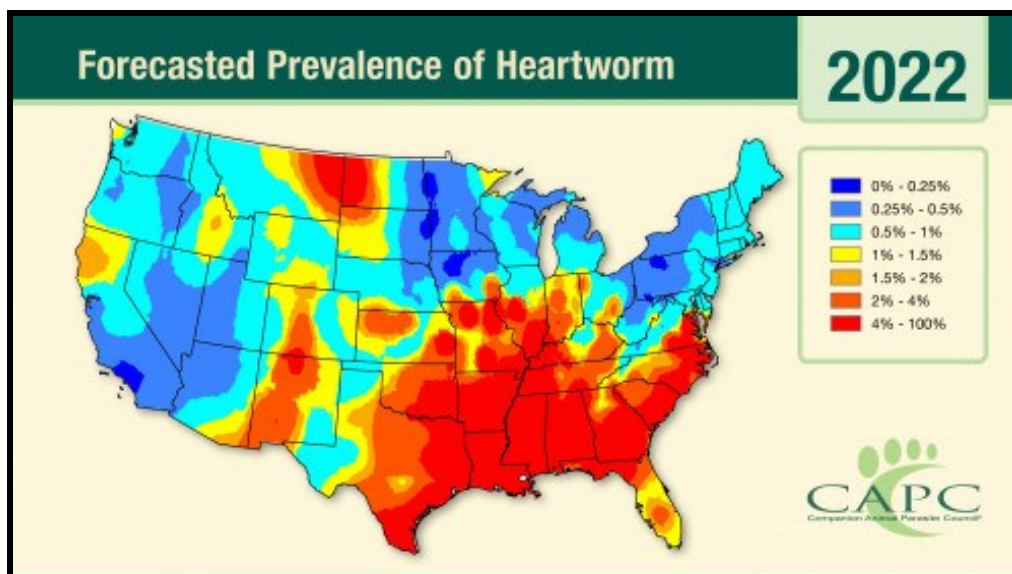
- (1) Get your pet tested for heartworm every 12 months, and
- (2) Give your pet heartworm preventive 12 months a year

### **PROTECT YOUR PETS FROM OTHER DISEASES COMMON TO ARKANSAS**

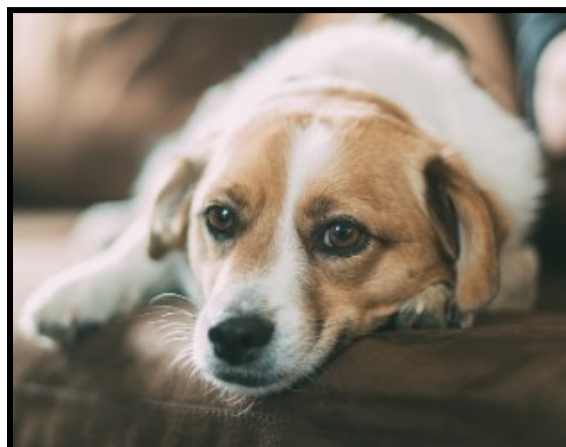
HSPC recommends annual vaccinations for your pets through your veterinarian to prevent many other infectious diseases common in Arkansas.



**AMERICAN  
HEARTWORM  
SOCIETY**  
EST. 1974



**Nearly all of Arkansas falls into the most severe range of 4% - 100%. Those numbers represent the percentage of positive heartworm tests for pets that are tested.**



## HSPC Aids Animal Control With Hoarding Case

According to the American Humane Society, animal hoarding is an accumulation of animals that has overwhelmed a person's ability to provide minimum standards of care. Those standards include nutrition, sanitation, shelter, veterinary care, and socialization.

A nearby animal control agency took in nearly 50 animals after a tip from neighbors about dogs found in cramped and unsanitary conditions. The agency had limited space and access to veterinary care. These animals needed a lot as none had vaccinations or were sterilized and some were suffering from existing health conditions and lack of socialization. Because they were small to medium size, we were able to accommodate 36 dogs in our limited space. As always HSPC will provide for their needs fully before release.

Because of their history and popularity of size, we will be adopting them through pre-approved applications on our website. As always, the adoptions are finalized only after the pet and adopters meet and make a "connection." We always appreciate your donations to help with their care.



**Malaki**

## Please Be A Part Of The Solution To Homeless Animals By Spaying Or Neutering Your Pets!

By spaying or neutering your pet, you can help protect them against illnesses associated with reproductive organs and address certain unwanted behaviors while saving money. At the same time you are contributing to the future of your community by reducing pet overpopulation. Contact your veterinarian to discuss and schedule your pet's appointment and encourage your family and friends to do the same. Some local resources for financial assistance are listed below. Please note they all require appointments.



### **ARKANSANS FOR ANIMALS, OPERATION SAVE**

[Arkansans4animals.org/operation-save](https://arkansans4animals.org/operation-save) 501-455-5400

11701 Interstate 30, Suite 2, Little Rock, AR 72209

Currently open Tuesday and Wednesday only

### **COMPANIONS SPAY AND NEUTER**

[Companionsspayandneuter.com](https://companionspayandneuter.com) 501-679-7900

589 U.S. Hwy 65, Greenbrier, AR 72058

### **FELINE RESCUE & REHOME (FuRR) Low-Cost Clinic**

[Teamfurr.org/clinic](https://teamfurr.org/clinic) 501-661-0956

Priority given to feral, stray and pregnant cats

### **ARKANSAS ANIMAL RESCUE FOUNDATION (AARF)**

[Arkansasanimalrescuefoundation.org/find-a-spay-neuter-program-partner](https://arkansasanimalrescuefoundation.org/find-a-spay-neuter-program-partner)

**Skip the expense entirely by adopting from a shelter or 501(c)3 animal rescue.** Ark. Code Ann. 20-19-103, as Amended in 1995, requires that ALL pets adopted from shelters supported by the public be sterilized (spayed or neutered).



Get ready for our PHOTO CONTEST! Beginning May 22, you can enter your pet in HSPC's 5th annual Adorable Arkansas Pets photo contest. Entries will be voted on online and the top 13 photos will be seen on the cover and as monthly featured pets in our 2024 wall calendar. There will also be other options for making sure your favorite pets are included.

Be sure to follow our Facebook page and [warmhearts.org](http://warmhearts.org) to get updates!

Contest runs May 22 - June 30 [gogophotocontest.com/hspc](http://gogophotocontest.com/hspc)

## 32nd Annual Reigning Cats & Dogs: Keeping It Royal

### Royal Proclamation

Save The Date

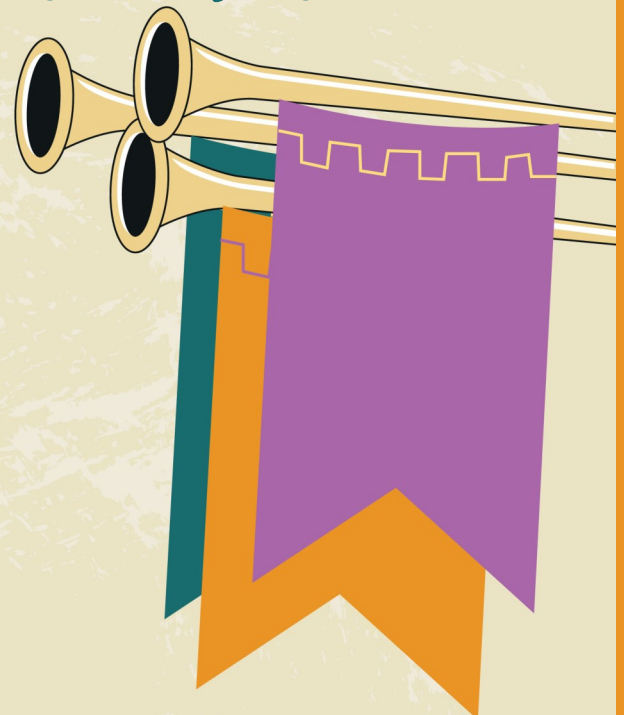
Saturday, November 4

Next Level Events

Historic Union Train Station

We are currently looking for event sponsors and new auction item donations or services.

Contact: [Debbie@warmhearts.org](mailto:Debbie@warmhearts.org)





♥♥ Spotlight On Warm Hearts ♥♥  
Subaru Of Little Rock



a big  
thank  
you!



SUBARU

HSPC had another wonderful event with **Subaru of Little Rock** on April 8! There was food, fun, and adoptable pets. Five HSPC pets found their homes during the event. On top of filling a car with donations, Subaru presented us with a check for \$35,535 thanks to their Share the Love Campaign! We are so grateful for our amazing partnership with Subaru of Little Rock. They truly love pets and have helped so many of ours!

**Bissell Pet Foundation's  
Empty The Shelter Event**

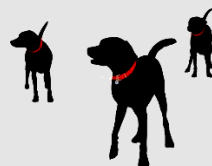
**\$50 Adoption Fee\***

Wednesday, May 3  
through  
Sunday, May 7  
- and -  
Wednesday, May 10  
through  
Sunday, May 14



Visit [bissellpetfoundation.org/ets](https://bissellpetfoundation.org/ets)  
for more information.

\* Some exclusions apply.



**BISSELL PET FOUNDATION®**  
Until every pet has a home.

## HUMANE SOCIETY of PULASKI COUNTY™

*Warm Hearts for Cold Noses*

14600 Colonel Glenn Road  
Little Rock, AR 72210  
501-227-6166

**How we are funded:** Our support comes from memberships, donations, fundraisers, and bequests. We receive no city, county or state funds - nor are we affiliated with any national animal organizations.

## *We'll Rise Up!*



“ALL WE NEED IS HOPE,  
AND FOR THAT WE HAVE EACH OTHER.  
WE’LL RISE UP,  
IN SPITE OF THE ACHE.  
WE’LL RISE UP,  
AND WE’LL DO IT A THOUSAND TIMES  
AGAIN.”

~ RISE UP BY ANDRA DAY



***Bronson*** came to HSPC as part of a recent hoarding case.  
See the full story on Page 5.



*This newsletter was created with love by Board members Debbie Howell and Sharon Morris, with contributions from Julie Austin.*

